

117 Nelson St. #6

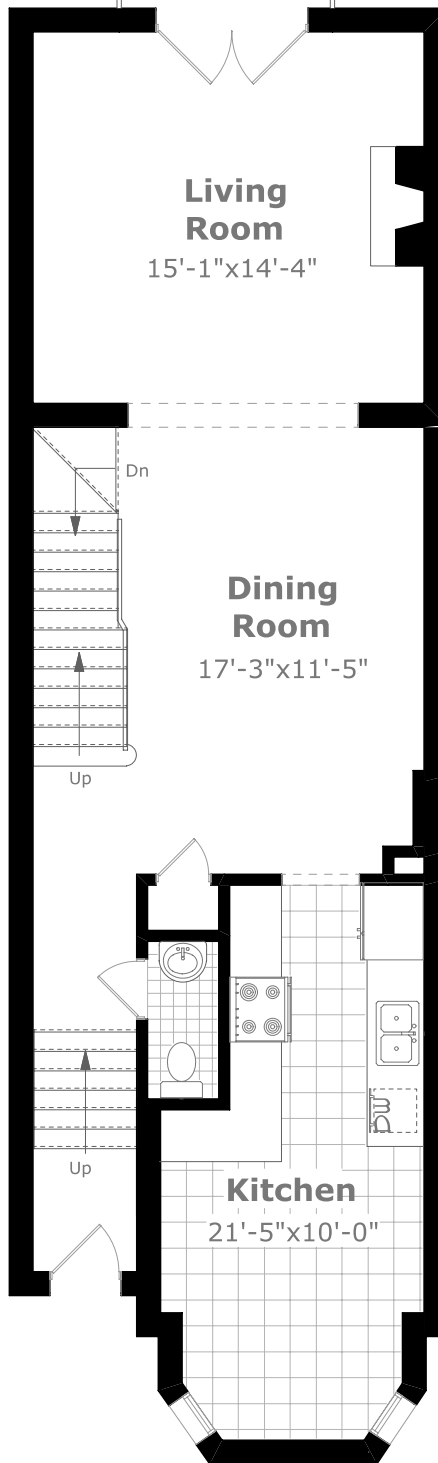
Scale (ft)



Scale (M)



September 2008



Main Level

9'-0" Ceilings
904.5 sq. ft.



Measurements may not be 100% accurate. Floor Plans provided for illustrative purposes only. Room sizes not used to calculate area.

117 Nelson St. #6

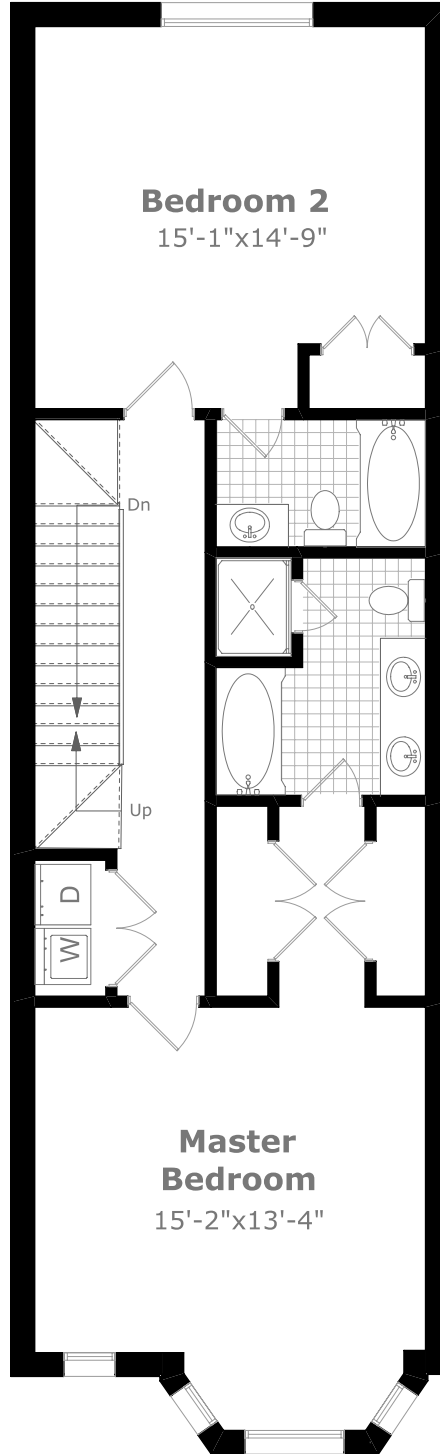
Scale (ft)



Scale (M)



September 2008



Upper Level

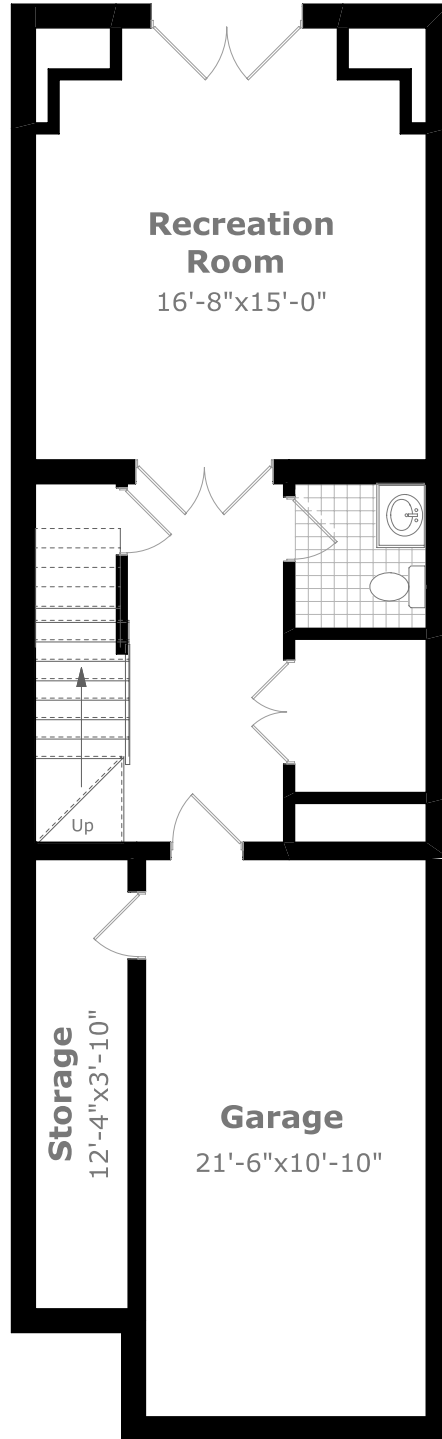
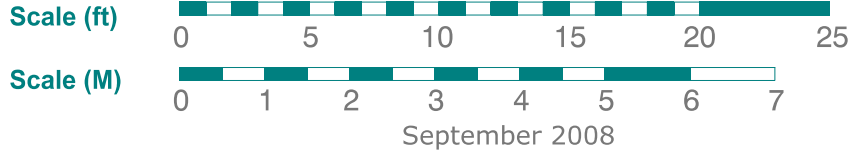
9'-0" Ceilings

922.0 sq. ft.



Measurements may not be 100% accurate. Floor Plans provided for illustrative purposes only. Room sizes not used to calculate area.

117 Nelson St. #6



Lower Level

558.3 sq. ft. +
361.5 sq.ft. (Garage&Storage)



Measurements may not be 100% accurate. Floor Plans provided for illustrative purposes only. Room sizes not used to calculate area.

117 Nelson St. #6

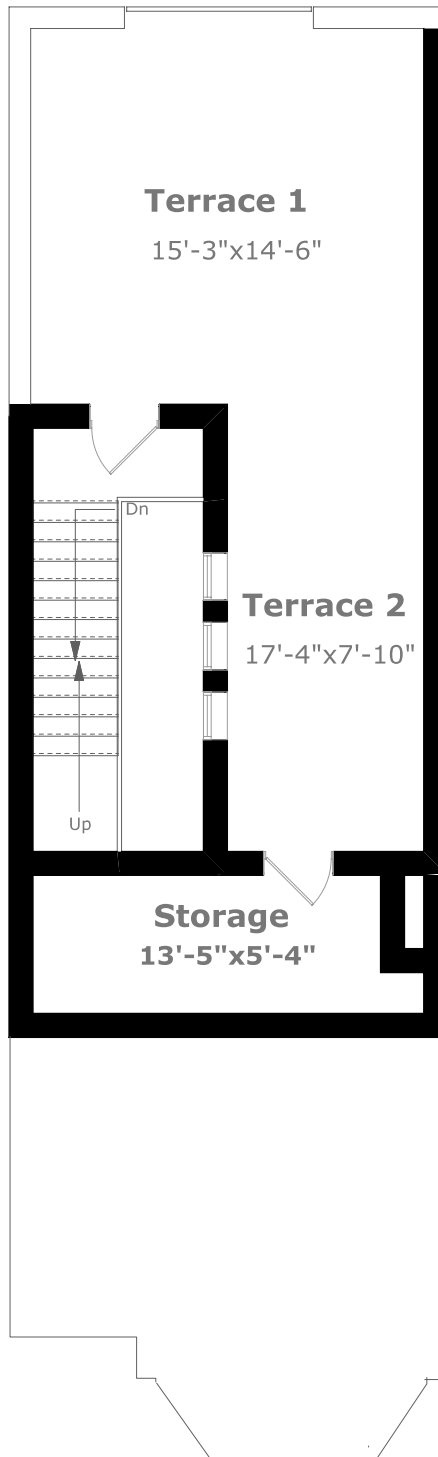
Scale (ft)



Scale (M)



September 2008



Terrace Level

672.4 sq. ft.



Measurements may not be 100% accurate. Floor Plans provided for illustrative purposes only. Room sizes not used to calculate area.