

# 1120 Queens Ave #1

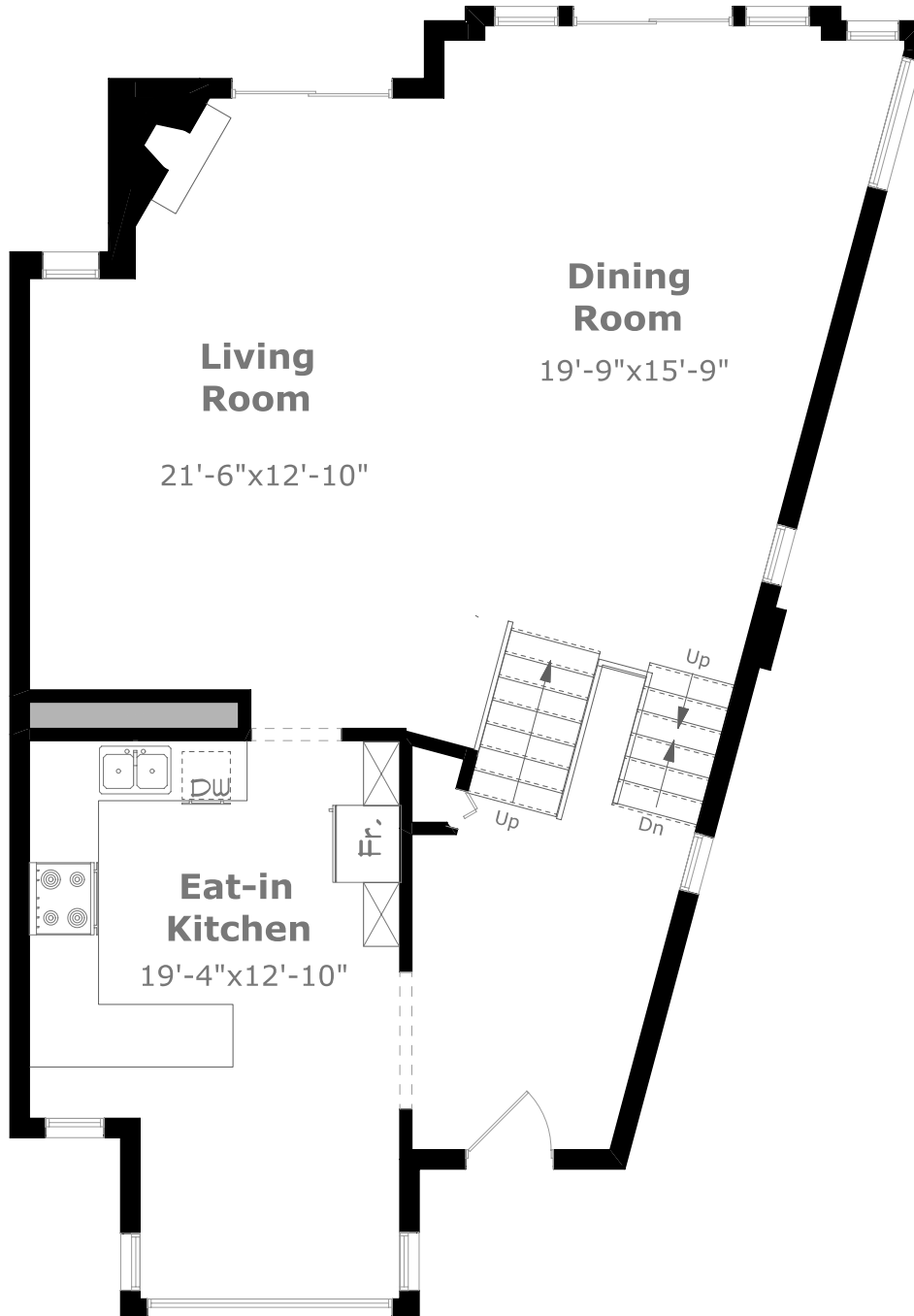
Scale (ft)



Scale (M)



May 2008



## Main Level

1,064.6 sq. ft.  
9'-3" Ceiling



Measurements may not be 100% accurate. Floor Plans provided for illustrative purposes only. Room sizes not used to calculate area.

# 1120 Queens Ave #1

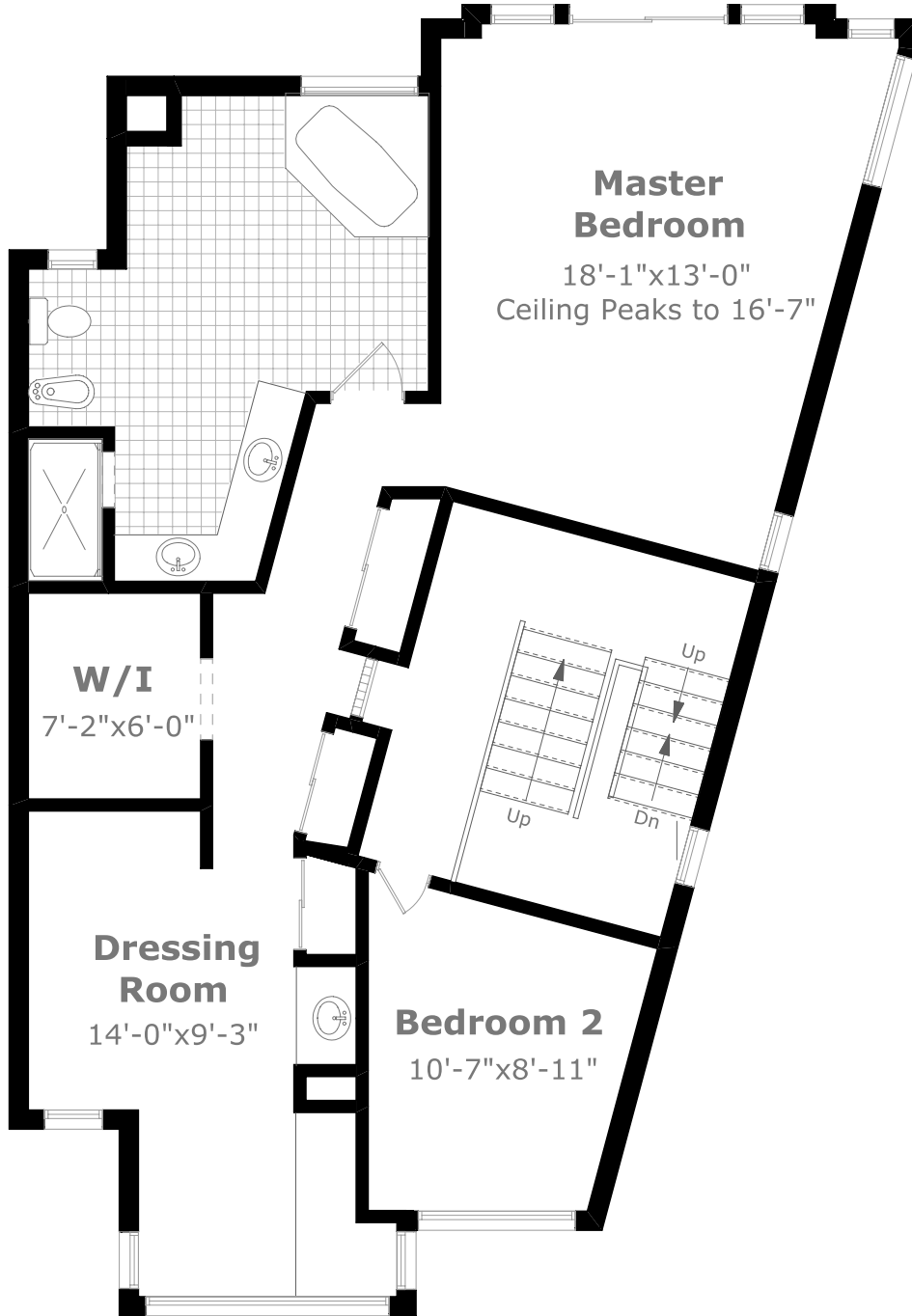
Scale (ft)



Scale (M)



May 2008



## Upper Level

1,080.2 sq. ft.



Measurements may not be 100% accurate. Floor Plans provided for illustrative purposes only. Room sizes not used to calculate area.

# 1120 Queens Ave #1

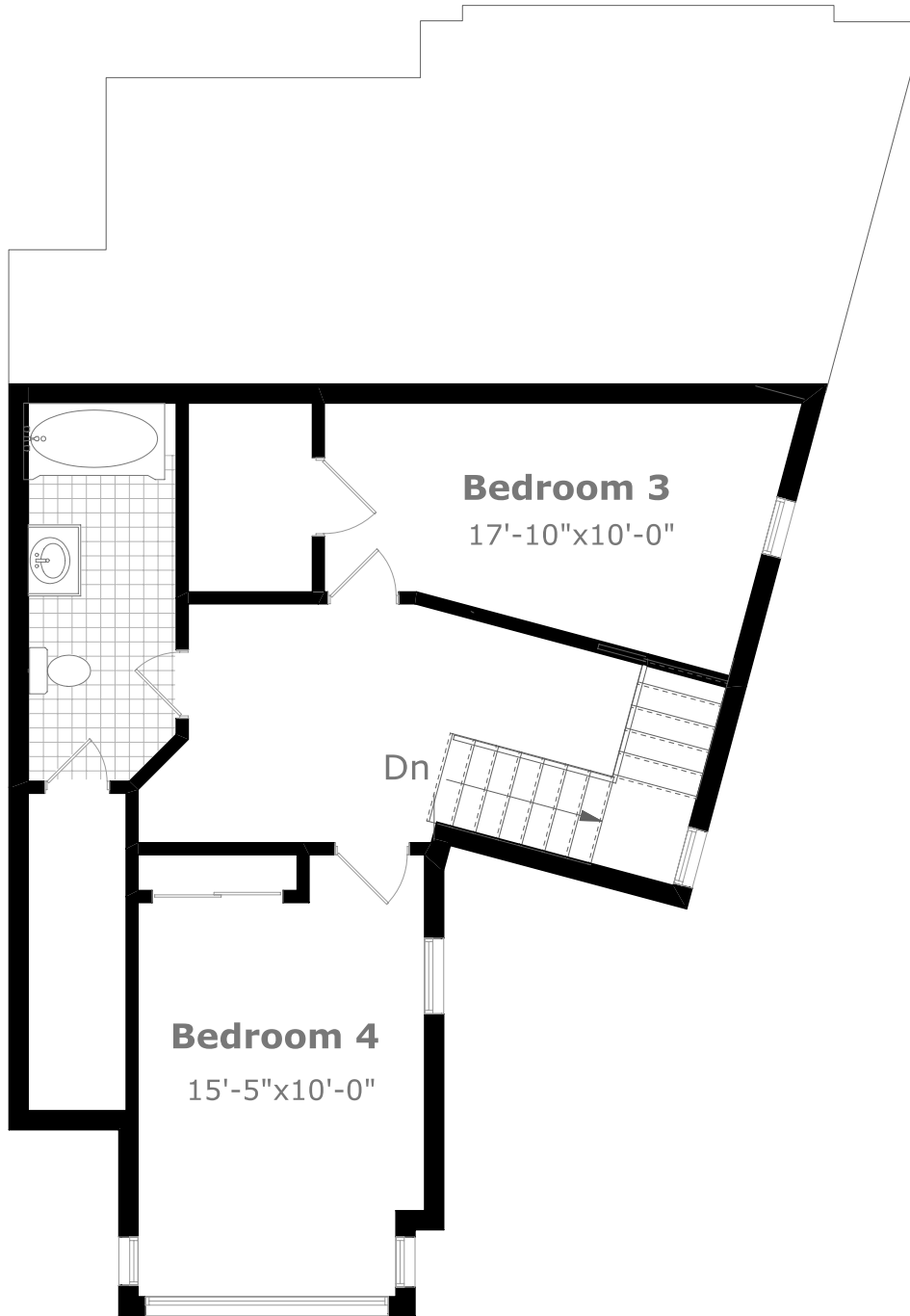
Scale (ft)



Scale (M)



May 2008



## 3rd Level

655.5 sq. ft.



Measurements may not be 100% accurate. Floor Plans provided for illustrative purposes only. Room sizes not used to calculate area.

# 1120 Queens Ave #1

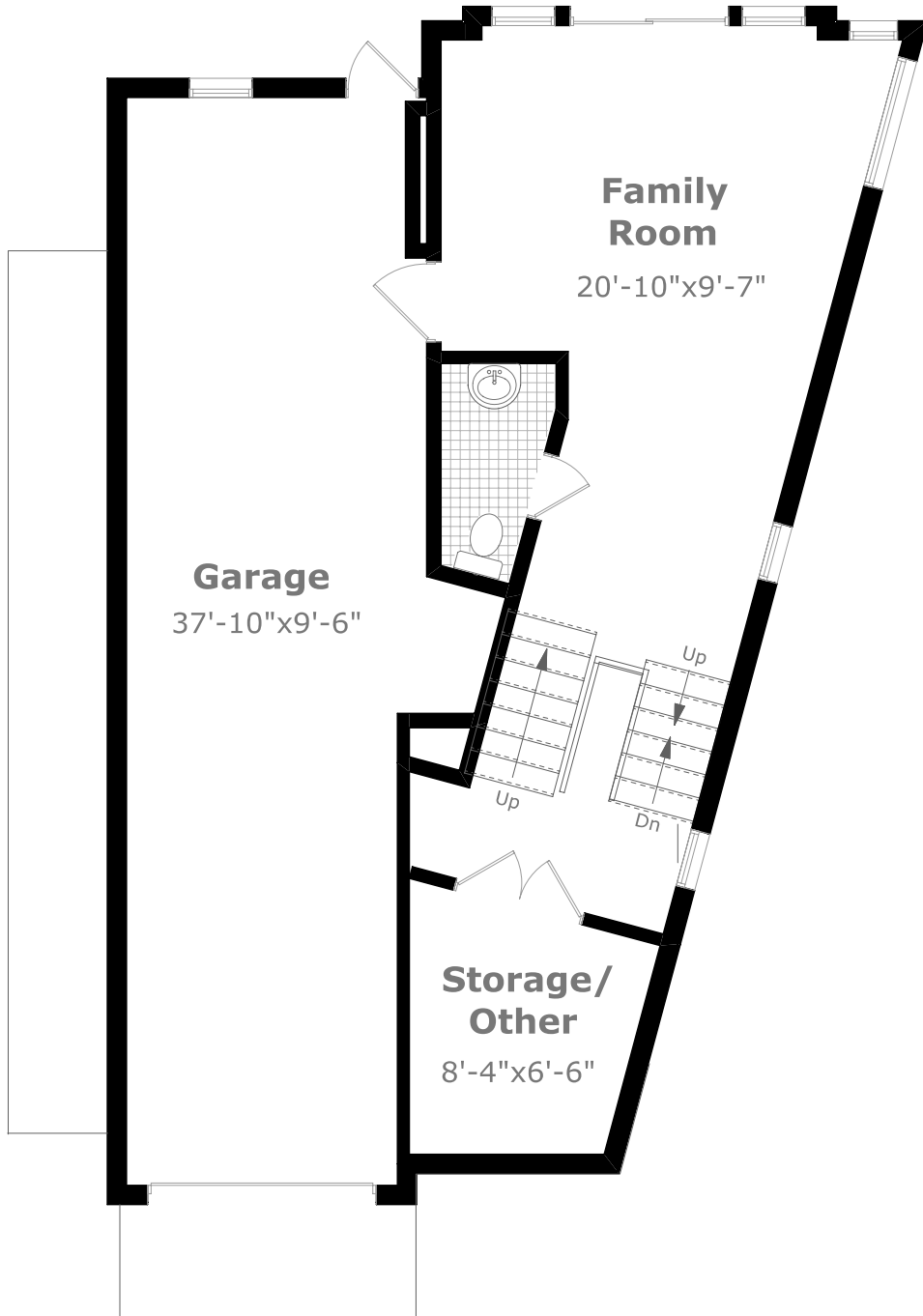
Scale (ft)



Scale (M)



May 2008



## Lower Level

486.0 sq. ft. +

448.4 sq. ft. (Garage)



Measurements may not be 100% accurate. Floor Plans provided for illustrative purposes only. Room sizes not used to calculate area.

# 1120 Queens Ave #1

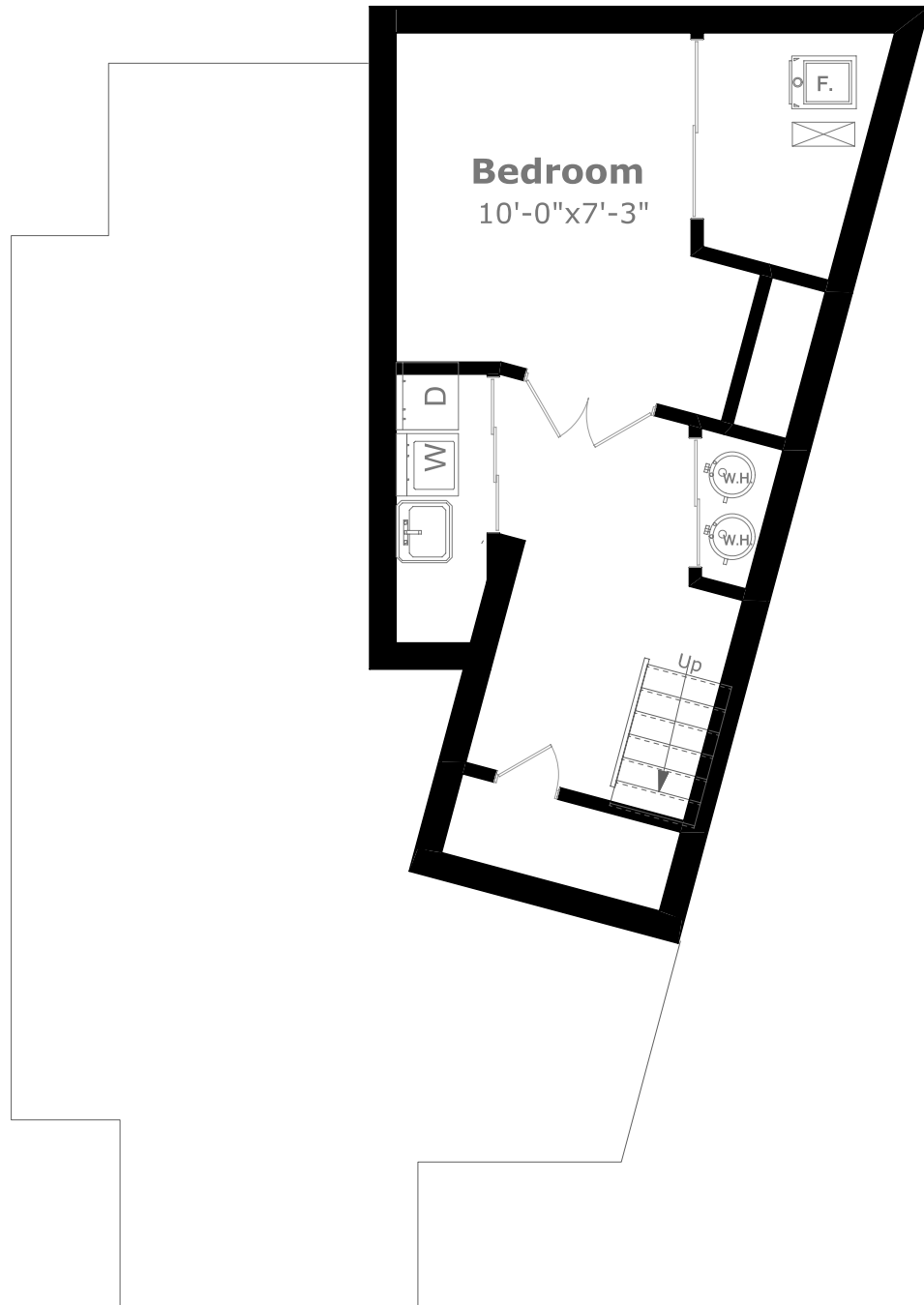
Scale (ft)



Scale (M)



May 2008



## Basement Level

459.1 sq. ft.



Measurements may not be 100% accurate. Floor Plans provided for illustrative purposes only. Room sizes not used to calculate area.