

The enclosed information while deemed to be correct, is not guaranteed.
This communication is not intended to solicit properties already listed for sale.

Produced and printed by **cotala** MARKETING www.cotala.com

LISTING features

302 – 15155 22 Avenue, South Surrey



Sutton Group - WestCoast Realty
AN INDEPENDENT MEMBER BROKER

Bus: 604.538.8888

Cell: 604.418.5786

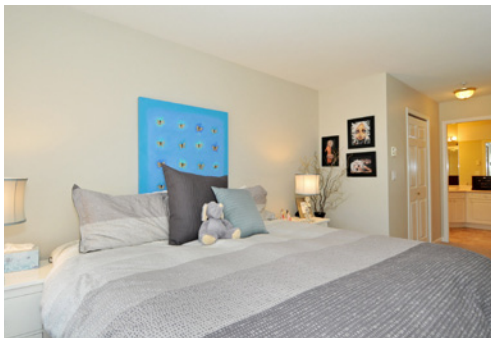
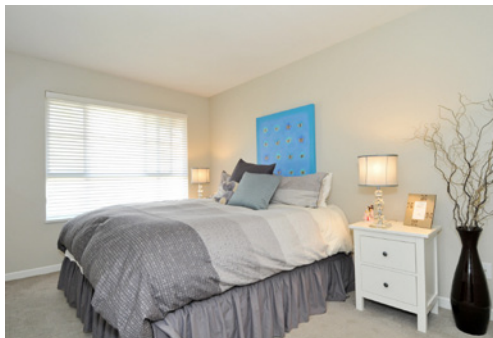
Fax: 604.538.0237

evon@evonmayer.com

www.evonmayer.com

Evon Mayer





VILLA PACIFIC-a well-managed and maintained condominium complex in a quiet location just blocks to shops, services, parks and Semiahmoo Trail. TOP FLOOR, updated very open bright floor plan with large windows. Modern neutral palette paint colors, new carpets, kitchen upgrades.Open, bright kitchen design.Large master bedroom overlooks Gardens-with walk in closet. The practical layout has bedrooms separated by living space and ensuite or adjacent bathrooms. Nicely appointed Master ensuite has double sink and large walk-in shower. Generously sized covered deck with Garden outlook, on a quiet no-thru street- is perfect for entertaining.All ages are welcome, one dog/cat is allowed, rentals are not allowed, quick possession is possible.

COMPLIMENTS OF
Evon Mayer

| | |
|----------------------|----------|
| Price | |
| Tax | \$1,556 |
| Maint. Fee | \$287.27 |
| Style | Condo |
| Bedrooms | 2 |
| Bathrooms | 2 |
| Size ft ² | 1,055 |