

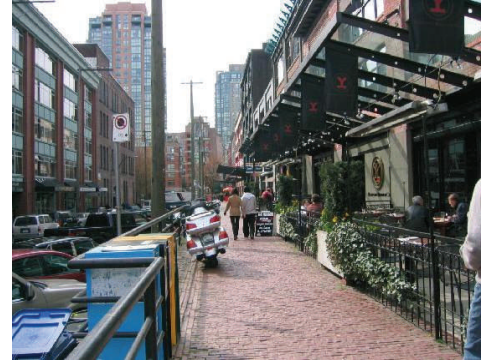
YALETOWN

RE/MAX MASTERS REALTY

YALETOWN NEIGHBOURHOOD GUIDE

Where: Yaletown is bordered by Homer St. to the west, Beatty St. to the east, Smithe St. to the north and Drake St. to the south.

Personality: Once an industrial district of warehouses, Yaletown has a distinct feel of its own. The heritage buildings blend with fashionable shops and hip eateries to create a strong sense of a self-sufficient neighbourhood. Chic places are all just steps away, like cosmetics mecca BeautyMark, restaurants Glowbal and the Elixir Lounge, Skoah spa and countless others. The recent development of several new buildings has significantly increased Yaletown's residential feel.



Mainland and Helmecken

Demographics: Yaletown is known for attracting a significant portion of 20 to 39 year olds, singles and couples. It also appeals highly to empty nesters and people downsizing from their homes.

SUSAN KEEVIL

Business: 604.913.9000

Cellular: 604.970.3658

Web: <http://www.susankeevil.com>

Email: susan@susankeevil.com

AMENITIES

- × Designer clothing boutiques, home furnishings
- × Pharmacy, Choices grocery store
- × Produce delis & liquor stores
- × Restaurants, cafes and nightlife
- × Vancouver Public Library close by
- × Walking distance to Skytrain

YALETOWN REAL ESTATE

Real Estate: You'll find historical buildings that are now lofts, new buildings with a loft style floor plan, as well as modern condos with up-to-date amenities like surround sound theatres and yoga rooms.

A lot of Vancouver's newer condo development is in this area, so you'll find the latest trends in condo development and luxurious accommodation.

New developments in

Yaletown include the opening of the final stage of Yaletown Park (Stage 3), as well as the H-H development currently under-construction at Homer and Helmecken.