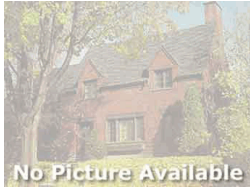


**7331 305 Arbutus Street, Pemberton, Winchester**

Status:	Sold	Built:	2005	Price:	\$220,000
Type:	Condominium	List Co:	WREC	Size:	821
L. Size:		Bed:	2.0	Bath:	2.00
List Date:	06/14/2007	MLS?:	Y		
Date Sold:	10/24/2007	Sld Price:	\$216,000	Includes Furniture?:	N Includes GST?: N

**1400 44 Park Street, Pemberton, Creekside Village**

Status:	Sold	Built:	1996	Price:	\$269,000
Type:	Condominium	List Co:	WREC	Size:	1,227
L. Size:		Bed:	2.0	Bath:	1.50
List Date:	09/26/2007	MLS?:	Y		
Date Sold:	10/19/2007	Sld Price:	\$262,000	Includes Furniture?:	N Includes GST?: N

**1450 35 Vine Road, Pemberton, Peaks**

Status:	Sold	Built:	2002	Price:	\$282,000
Type:	Condominium	List Co:	RE/MAX	Size:	1,070
L. Size:		Bed:	2.0	Bath:	2.00
List Date:	08/20/2007	MLS?:	N		
Date Sold:	10/22/2007	Sld Price:	\$278,000	Includes Furniture?:	N Includes GST?: N

**1400 6 Park Street, Pemberton, Creekside Village**

Status:	Sold	Built:	1997	Price:	\$319,000
Type:	Condominium	List Co:	RE/MAX	Size:	1,409
L. Size:		Bed:	3.0	Bath:	2.50
List Date:	06/27/2007	MLS?:	Y		
Date Sold:	10/05/2007	Sld Price:	\$299,000	Includes Furniture?:	N Includes GST?: N

**7408 21 Cottonwood Street, Pemberton, Cottonwood Court**

Status:	Sold	Built:	1996	Price:	\$319,900
Type:	Condominium	List Co:	RE/MAX	Size:	0
L. Size:		Bed:	3.0	Bath:	2.50
List Date:	07/06/2007	MLS?:	Y		
Date Sold:	10/06/2007	Sld Price:	\$313,000	Includes Furniture?:	N Includes GST?: N

**7381 3 Laurel Street, Pemberton, Monte Vale**

Status:	Sold	Built:	1997	Price:	\$349,000
Type:	Condominium	List Co:	RE/MAX	Size:	1,666
L. Size:	na	Bed:	3.5	Bath:	2.00
List Date:	10/10/2007	MLS?:	Y		
Date Sold:	10/29/2007	Sld Price:	\$330,000	Includes Furniture?:	N Includes GST?: N

**1450 67 Vine Road, Pemberton, Peaks**

Status:	Sold	Built:	2002	Price:	\$359,000
Type:	Condominium	List Co:	RE/MAX	Size:	1,344
L. Size:		Bed:	3.0	Bath:	2.00
List Date:	10/09/2007	MLS?:	Y		
Date Sold:	10/29/2007	Sld Price:	\$349,000	Includes Furniture?:	N Includes GST?: N

**1446 5 Vine Road, Pemberton, Pioneer Junction**

Status:	Sold	Built:	2003	Price:	\$359,900
Type:	Condominium	List Co:	RE/MAX	Size:	1,361
L. Size:		Bed:	3.0	Bath:	2.00
List Date:	09/19/2007	MLS?:	Y		
Date Sold:	10/09/2007	Sld Price:	\$352,500	Includes Furniture?:	N Includes GST?: N

**1450 51 Vine Road, Pemberton, Peaks**

Status:	Sold	Built:	2001	Price:	\$364,900	*
Type:	Condominium	List Co:	RE/MAX	Size:	1,467	
L. Size:		Bed:	3.5	Bath:	2.00	
List Date:	09/16/2007	MLS?:	Y			
Date Sold:	10/09/2007	Sld Price:	\$355,000	Includes Furniture?:	N	Includes GST?: Y

**7360 2 Pemberton Farm Road, Pemberton, Pemberton Plateau Townhomes**

Status:	Sold	Built:	2005	Price:	\$379,000	*
Type:	Condominium	List Co:	SWCR	Size:	1,832	
L. Size:		Bed:	3.0	Bath:	2.50	
List Date:	08/12/2007	MLS?:	Y			
Date Sold:	10/23/2007	Sld Price:	\$375,000	Includes Furniture?:	N	Includes GST?: N

**7634 Pemberton Meadows Road, Pemberton,**

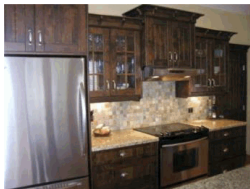
Status:	Sold	Built:	1991	Price:	\$379,000	
Type:	Mobile Home	List Co:	WREC	Size:	1,430	
L. Size:	15333	Bed:	3.0	Bath:	2.00	
List Date:	09/20/2007	MLS?:	N			
Date Sold:	10/21/2007	Sld Price:	\$365,000	Includes Furniture?:	N	Includes GST?: N

**7360 23 Pemberton Farm Road, Pemberton, Pemberton Plateau Townhomes**

Status:	Sold	Built:	2003	Price:	\$389,000	*
Type:	Condominium	List Co:	SWCR	Size:	1,924	
L. Size:		Bed:	3.0	Bath:	2.50	
List Date:	07/07/2007	MLS?:	Y			
Date Sold:	10/10/2007	Sld Price:	\$375,000	Includes Furniture?:	N	Includes GST?: N

**1999 Sea to Sky Highway, Pemberton,**

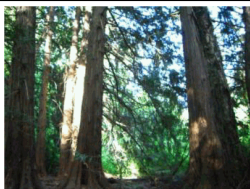
Status:	Sold	Built:	0T	Price:	\$429,000	*
Type:	Chalet	List Co:	WREC	Size:	3,920	
L. Size:	2.54 acres	Bed:	4.0	Bath:	2.00	
List Date:	05/04/2007	MLS?:	Y			
Date Sold:	10/10/2007	Sld Price:	\$410,000	Includes Furniture?:	N	Includes GST?: N

**1763 Pinewood Drive, Pemberton,**

Status:	Sold	Built:	2004	Price:	\$889,000	
Type:	Chalet	List Co:	RE/MAX	Size:	4,572	
L. Size:	8966	Bed:	3.0	Bath:	2.50	
List Date:	10/25/2006	MLS?:	Y			
Date Sold:	10/04/2007	Sld Price:	\$860,000	Includes Furniture?:	N	Includes GST?: N

**9692 Devine Street, Devine,**

Status:	Sold	Built:	1970	Price:	\$165,000	*
Type:	Chalet	List Co:	SWCR	Size:	800	
L. Size:	1.82 acres	Bed:	2.5	Bath:	1.00	
List Date:	03/13/2007	MLS?:	Y			
Date Sold:	10/29/2007	Sld Price:	\$157,000	Includes Furniture?:	N	Includes GST?: N

**Cedar Gates, Birken,**

Status:	Sold	Built:		Price:	\$345,000	*
Type:	Vacant Land	List Co:	WREC	Size:		
L. Size:	15.38 acres	Bed:		Bath:		
List Date:	06/27/2007	MLS?:	Y			
Date Sold:	10/18/2007	Sld Price:	\$330,000	Includes Furniture?:	N	Includes GST?: N