

**7410 23 Flint Street, Pemberton, Mountain Trails**

Status:	<b>Sold</b>	Built:	<b>1998</b>	Price:	<b>\$239,900</b>
Type:	<b>Condominium</b>	List Co:	<b>WREC</b>	Size:	<b>751</b>
L. Size:		Bed:	<b>2.0</b>	Bath:	<b>1.00</b>
List Date:	<b>05/13/2009</b>	MLS?:	<b>Y</b>		
Date Sold:	<b>06/26/2009</b>	Sld Price:	<b>\$229,100</b>	Includes Furniture?:	<b>N</b> Includes GST?: <b>N</b>

**7416 31 Flint Street, Pemberton, Chelsea Place**

Status:	<b>Sold</b>	Built:	<b>1972</b>	Price:	<b>\$269,995</b> *
Type:	<b>Townhouse</b>	List Co:	<b>RE/MAX</b>	Size:	<b>1,050</b>
L. Size:		Bed:	<b>3.0</b>	Bath:	<b>1.50</b>
List Date:	<b>03/27/2009</b>	MLS?:	<b>Y</b>		
Date Sold:	<b>06/26/2009</b>	Sld Price:	<b>\$265,000</b>	Includes Furniture?:	<b>N</b> Includes GST?: <b>N</b>

**1447 4 Vine Road, Pemberton, Pioneer Junction**

Status:	<b>Sold</b>	Built:	<b>2004</b>	Price:	<b>\$274,000</b>
Type:	<b>Condominium</b>	List Co:	<b>WREC</b>	Size:	<b>784</b>
L. Size:		Bed:	<b>2.0</b>	Bath:	<b>1.00</b>
List Date:	<b>03/23/2009</b>	MLS?:	<b>Y</b>		
Date Sold:	<b>06/02/2009</b>	Sld Price:	<b>\$267,000</b>	Includes Furniture?:	<b>N</b> Includes GST?: <b>N</b>

**1442 7 Vine Road, Pemberton, Pioneer Junction**

Status:	<b>Sold</b>	Built:	<b>2004</b>	Price:	<b>\$294,000</b>
Type:	<b>Condominium</b>	List Co:	<b>WREC</b>	Size:	<b>784</b>
L. Size:		Bed:	<b>2.0</b>	Bath:	<b>1.00</b>
List Date:	<b>10/13/2008</b>	MLS?:	<b>Y</b>		
Date Sold:	<b>06/19/2009</b>	Sld Price:	<b>\$275,000</b>	Includes Furniture?:	<b>Y</b> Includes GST?: <b>N</b>

**7408 31 Cottonwood Court, Pemberton, Cottonwood Court**

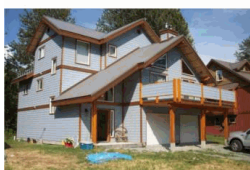
Status:	<b>Sold</b>	Built:		Price:	<b>\$359,000</b> *
Type:	<b>Townhouse</b>	List Co:	<b>RE/MAX</b>	Size:	<b>1,566</b>
L. Size:		Bed:	<b>3.0</b>	Bath:	<b>2.00</b>
List Date:	<b>05/08/2009</b>	MLS?:	<b>Y</b>		
Date Sold:	<b>06/25/2009</b>	Sld Price:	<b>\$352,000</b>	Includes Furniture?:	<b>N</b> Includes GST?: <b>N</b>

**1450 32 Vine Road, Pemberton, Peaks**

Status:	<b>Sold</b>	Built:	<b>1997</b>	Price:	<b>\$359,900</b>
Type:	<b>Townhouse</b>	List Co:	<b>WREC</b>	Size:	<b>1,344</b>
L. Size:		Bed:	<b>3.0</b>	Bath:	<b>2.00</b>
List Date:	<b>06/09/2009</b>	MLS?:	<b>Y</b>		
Date Sold:	<b>06/25/2009</b>	Sld Price:	<b>\$354,500</b>	Includes Furniture?:	<b>N</b> Includes GST?: <b>Y</b>

**7578 Taylor Road, Pemberton,**

Status:	<b>Sold</b>	Built:	<b>1970</b>	Price:	<b>\$469,000</b>
Type:	<b>Chalet</b>	List Co:	<b>WREC</b>	Size:	<b>1,586</b>
L. Size:	<b>.34 acres</b>	Bed:	<b>2.0</b>	Bath:	<b>1.00</b>
List Date:	<b>05/18/2009</b>	MLS?:	<b>Y</b>		
Date Sold:	<b>06/12/2009</b>	Sld Price:	<b>\$445,500</b>	Includes Furniture?:	<b>N</b> Includes GST?: <b>N</b>

**1429 Willow Drive, Pemberton,**

Status:	<b>Sold</b>	Built:	<b>2002</b>	Price:	<b>\$579,000</b>
Type:	<b>Chalet</b>	List Co:	<b>WREC</b>	Size:	<b>2,401</b>
L. Size:		Bed:	<b>3.0</b>	Bath:	<b>2.50</b>
List Date:	<b>06/13/2009</b>	MLS?:	<b>N</b>		
Date Sold:	<b>06/30/2009</b>	Sld Price:	<b>\$579,000</b>	Includes Furniture?:	<b>N</b> Includes GST?: <b>N</b>


**3699 Tye Place, Anderson Lake,**

Status:	<b>Sold</b>	Built:	<b>1978</b>	Price:	<b>\$199,900</b>	*
Type:	<b>Mobile Home</b>	List Co:	<b>WREC</b>	Size:	<b>980</b>	
L. Size:	<b>8494 sq. ft.</b>	Bed:	<b>2.0</b>	Bath:	<b>1.00</b>	
List Date:	<b>06/04/2009</b>			MLS?:	<b>Y</b>	
Date Sold:	<b>06/17/2009</b>	Sld Price:	<b>\$175,500</b>	Includes Furniture?:	<b>N</b>	Includes GST?: <b>N</b>


**100 pole Gun Lake Road, Gun Lake,**

Status:	<b>Sold</b>	Built:	<b>1994</b>	Price:	<b>\$424,900</b>	*
Type:	<b>Chalet</b>	List Co:	<b>RE/MAX</b>	Size:	<b>1,367</b>	
L. Size:	<b>1.18 Acres</b>	Bed:	<b>3.0</b>	Bath:	<b>2.00</b>	
List Date:	<b>05/12/2009</b>			MLS?:	<b>Y</b>	
Date Sold:	<b>06/26/2009</b>	Sld Price:	<b>\$424,900</b>	Includes Furniture?:	<b>N</b>	Includes GST?: <b>N</b>