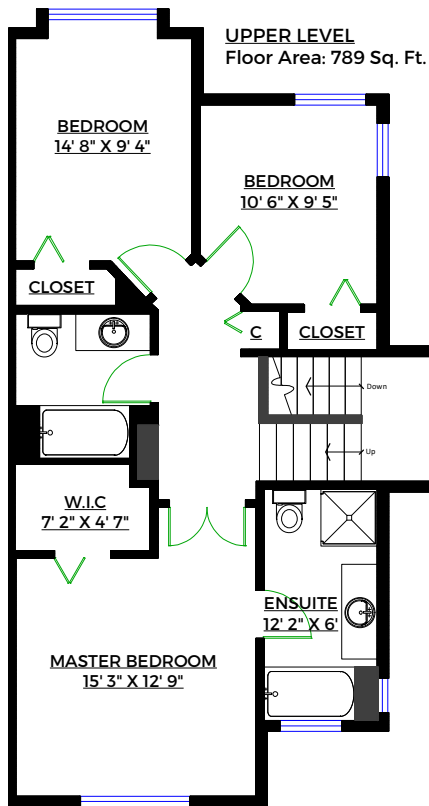




Cortney Lessard
604-616-2678



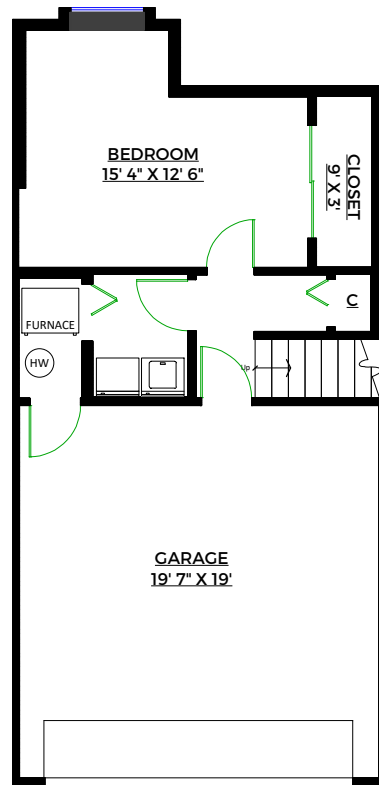
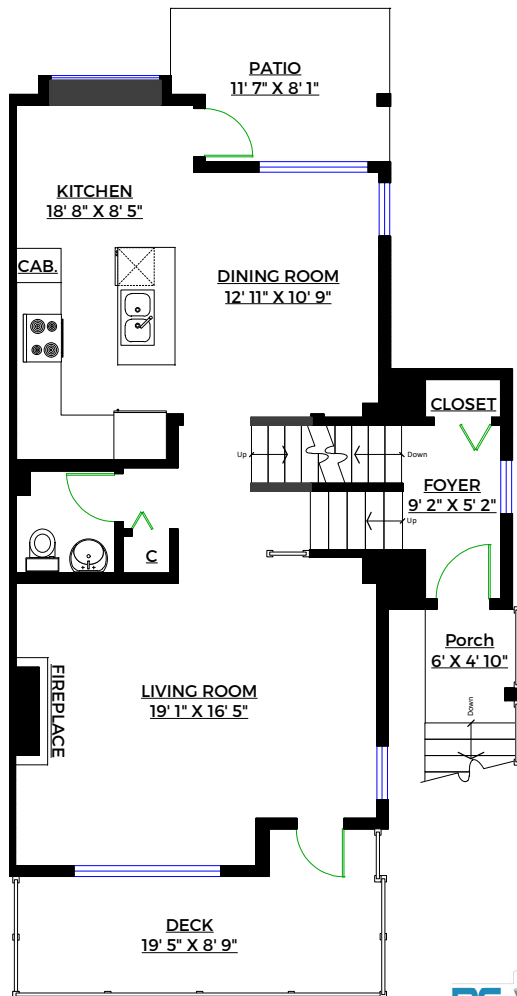
**#17-55 Hawthorne Ave,
Port Coquitlam, B.C.**

Totals**

Main Level:	862 sq. ft.
Upper Level:	789 sq. ft.
Lower Level:	348 sq. ft.
Total (Fin.):	1,999 sq. ft.
Mechanical:	21 sq. ft.
Grand Total:	2,020 sq. ft.

Other Areas**

Garage:	401 sq. ft.
Patio:	87 sq. ft.
Porch:	29 sq. ft.
Deck:	135 sq. ft.
Total:	652 sq. ft.



** Approx. based on interior measurements to exterior walls
** Total square footage not taken from original blueprints
** Includes under-height and unfinished areas