

Cortney Lessard

604-616-2678

info@cortney.ca

Century 21 In Town Realty www.cortney.ca

#103 - 7428 Byrnespark Walk Burnaby

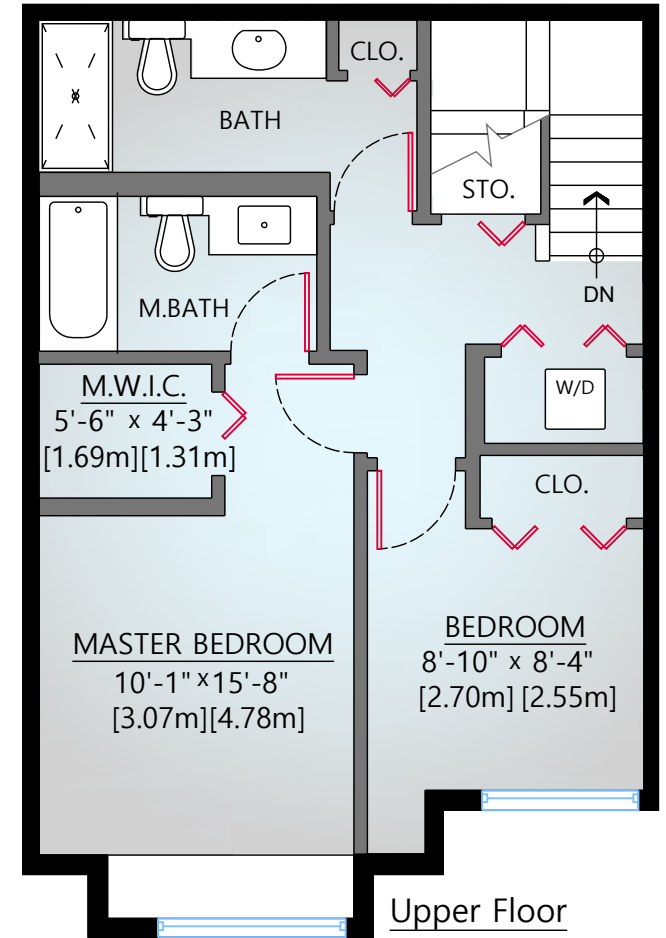
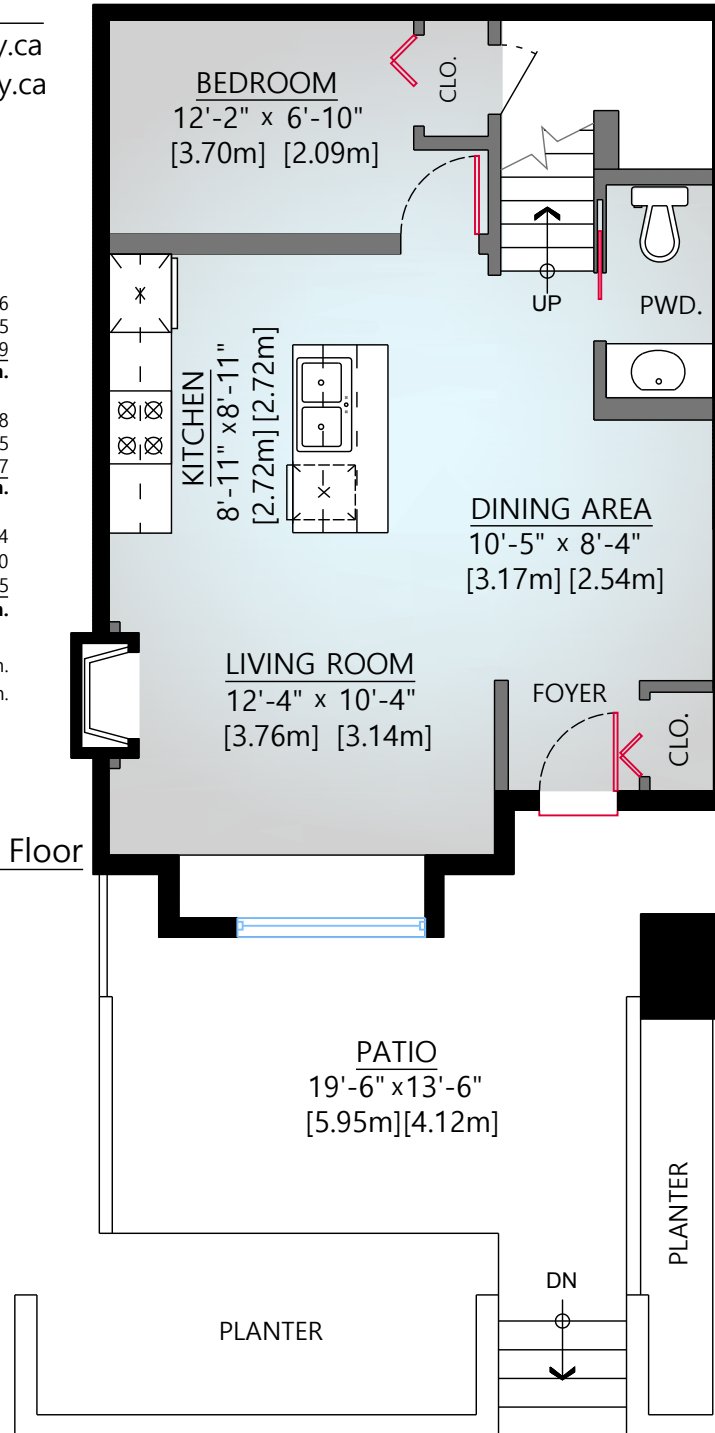
Main Floor:	Floor:	457 sq.ft.	42.46
	Exterior Walls:	49 sq.ft.	4.55
	Under Stairs:	44 sq.ft.	4.09
	Total:	550 sq.ft.	51.10 sq.m.

Upper Floor:	Floor:	453 sq.ft.	42.08
	Exterior Walls:	50 sq.ft.	4.65
	Stairs:	47 sq.ft.	4.37
	Total:	550 sq.ft.	51.10 sq.m.

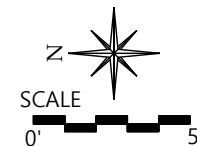
Total Floor	910 sq.ft.	84.54
Total Walls	99 sq.ft.	9.20
Total Stairs	91 sq.ft.	8.45
Grand Total:	1,100 sq.ft.	102.19 sq.m.

Patio:	205 sq.ft.	19.04 sq.m.
Bay Windows:	36 sq.ft.	3.34 sq.m.

Main Floor



Upper Floor



Pixilink
SOLUTIONS

Sq.ft. is E&O insured up to \$1,000,000

This floor plan is not suitable for architectural/construction use **604-639-5434**

Total sq.ft. is calculated using BOMA Standard Method A (unit gross area) WWW.PIXILINK.COM