

THE CLASSIC HOMES AT BELMONT

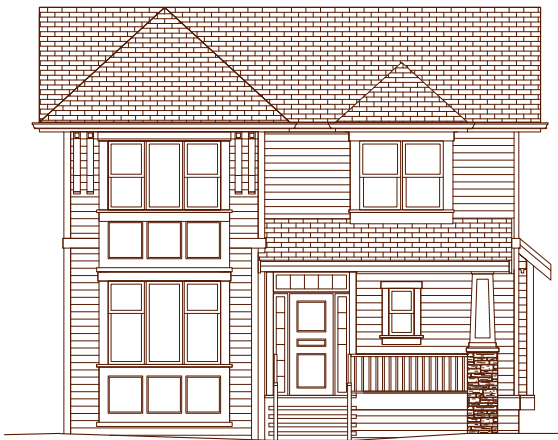
SELKIRK

4 BEDROOMS, 2-1/2 BATHROOMS 3,499 SQ. FT. (INCLUDING UNFINISHED BASEMENT)

PRELIMINARY



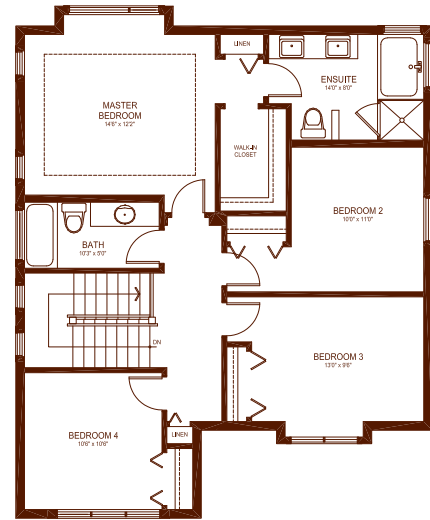
SELKIRK A



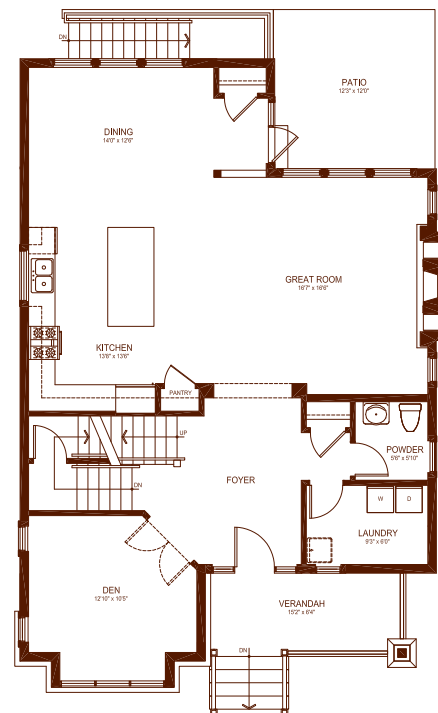
SELKIRK B



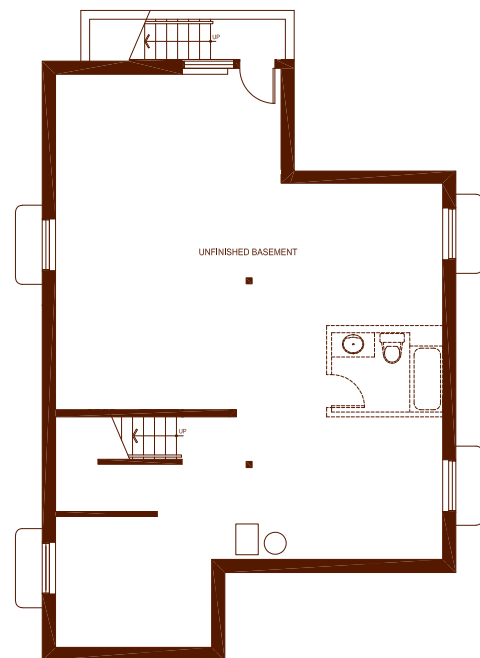
SELKIRK C



UPPER FLOOR 1,065 SQ. FT.



MAIN FLOOR 1,230 SQ. FT.



UNFINISHED BASEMENT 1,204 SQ. FT.



Morningstar Homes Ltd. reserves the right to make modifications and changes to the building designs, specifications and features should they become necessary. Floor plans, elevations, room sizes and square footages are based on preliminary architectural drawings and may vary from the actual built home. E.&O.E.

PROOF	DATE	FILE	TRIM SIZE	LIVE SIZE	BLEED SIZE	LINE SCREEN
3.0	OCT 5.09	18303 Belmont Selkirk fplan	11" x 17"	0.00" x 0.00"	.125"	TBD
COLOUR			NOTES / STOCK:			
C	M	Y	K	BELMONT SELKIRK FLOORPLAN		
B3 COMMUNICATIONS INC.						

CD	D	P
CW	A	