

STERLING

IN COQUITLAM

FAMILY: THE BEST REASON TO CALL STERLING HOME

GILLIS

4 BEDROOMS, 3 1/2 BATHROOMS, 2,416 SQ. FT. (INCLUDING FINISHED BASEMENT)



GILLIS A



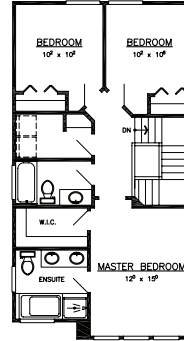
GILLIS B



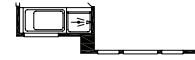
GILLIS C



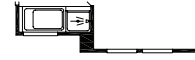
GILLIS D



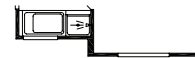
UPPER FLOOR
759 SQ. FT.



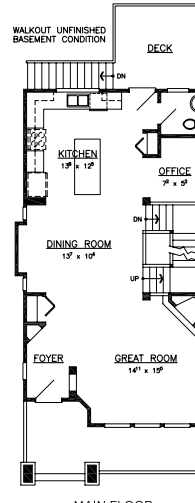
GILLIS B



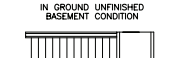
GILLIS C



GILLIS D



MAIN FLOOR
832 SQ. FT.



GILLIS B



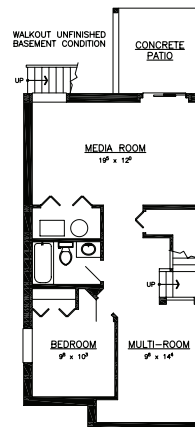
GILLIS C



GILLIS D



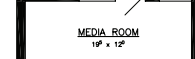
IN GROUND
ENTRY



FINISHED BASEMENT
825 SQ. FT.



GILLIS B



GILLIS C



GILLIS D