

STERLING

IN COQUITLAM

FAMILY: THE BEST REASON TO CALL STERLING HOME

BELAIR

4 BEDROOMS, 2 1/2 BATHROOMS, 3,185 SQ. FT. (INCLUDING UNFINISHED BASEMENT)



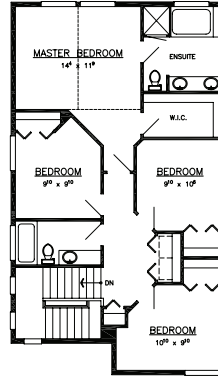
BELAIR A



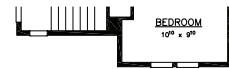
BELAIR B



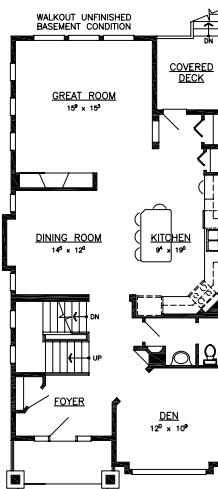
BELAIR C



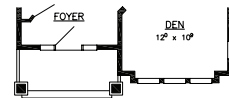
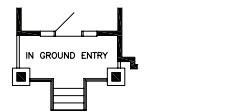
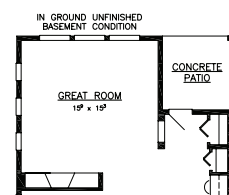
UPPER FLOOR
928 SQ. FT.



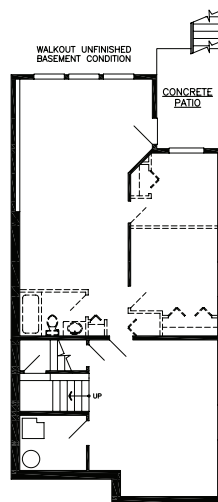
BELAIR B & C



MAIN FLOOR
1135 SQ. FT.



BELAIR B & C



UNFINISHED BASEMENT
1122 SQ. FT.

